

RESOLUTION NO. 07-113

**RESOLUTION EXPANDING THE BOUNDARIES OF RURAL SPECIAL IMPROVEMENT
MAINTENANCE DISTRICT #696M
ELK RIVER SUBDIVISION**

WHEREAS, the Board of County Commissioners of Yellowstone County, Montana, have been presented with a valid petition to Expand Rural Special Improvement Maintenance District (RSID) #696M for Elk River Subdivision, shown in Exhibit A (map) and,

WHEREAS, the County has received a petition signed by 100% of the property owners of Elk River Subdivision 2nd Filing to be included in RSID 696M by expanding the district boundaries to include Elk River Subdivision 2nd Filing; and

WHEREAS, pursuant to §7-12-2161(4), MCA, the Commissioners have the power of changing, by resolution, the boundaries of any maintenance district not more than once a year; and

WHEREAS, the boundaries of RSID 696M have not been changed within the last year; and

WHEREAS, the Board of County Commissioners finds, determines and declares that:

1. The public interest or convenience requires the expansion of a Rural Special Improvement Maintenance District as hereinafter described;
2. The costs of providing maintenance shall be borne by owners of the property included within the boundaries of the Rural Special Improvement Maintenance District with all existing and future lots being assessed an equal amount on a per lot basis;
3. The purpose of expanding the District is to provide for the maintenance, preservation and repair of the public streets located within the boundaries of this District;

NOW, THEREFORE, BE IT RESOLVED by the Board of County Commissioners of Yellowstone County as follows:

1. The Commissioners has jurisdiction to expand Rural Special Maintenance District No. 696M to provide for the maintenance, preservation and repair of the public streets within the district. The maintenance costs are more particularly described in Exhibit B. The estimated costs shown do not preclude other eligible street maintenance expenditures and the annual estimated cost of maintenance is subject to review and revision.

Page 2

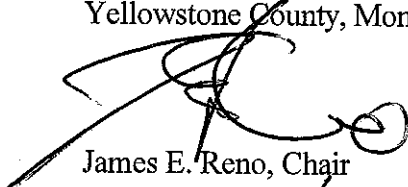
Resolution Expanding
R.S.I.D.# 696M

2. All of the costs of the District shall be assessed equally on a per lot basis for all existing and future lots. The boundaries of this District are shown on the map attached as Exhibit A and described as Lots 1-4 Block 1 Elk River Subdivision; Lots 4 & 5 Block 1 Coyote Subdivision; and Lots 1-9 Block 2 Elk River Subdivision 2nd Filing .

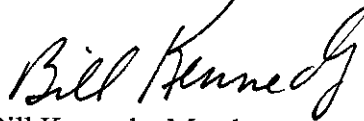
PASSED AND ADOPTED by the Board of County Commissioners of Yellowstone County, Montana, this 13th day of November, 2007.

Board of County Commissioners
Yellowstone County, Montana

(SEAL)

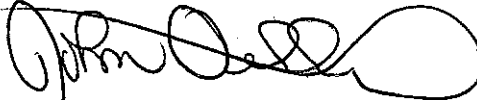


James E. Reno, Chair

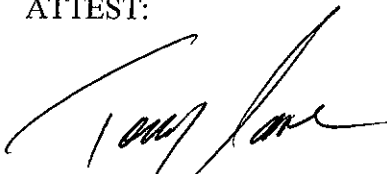


Bill Kennedy, Member

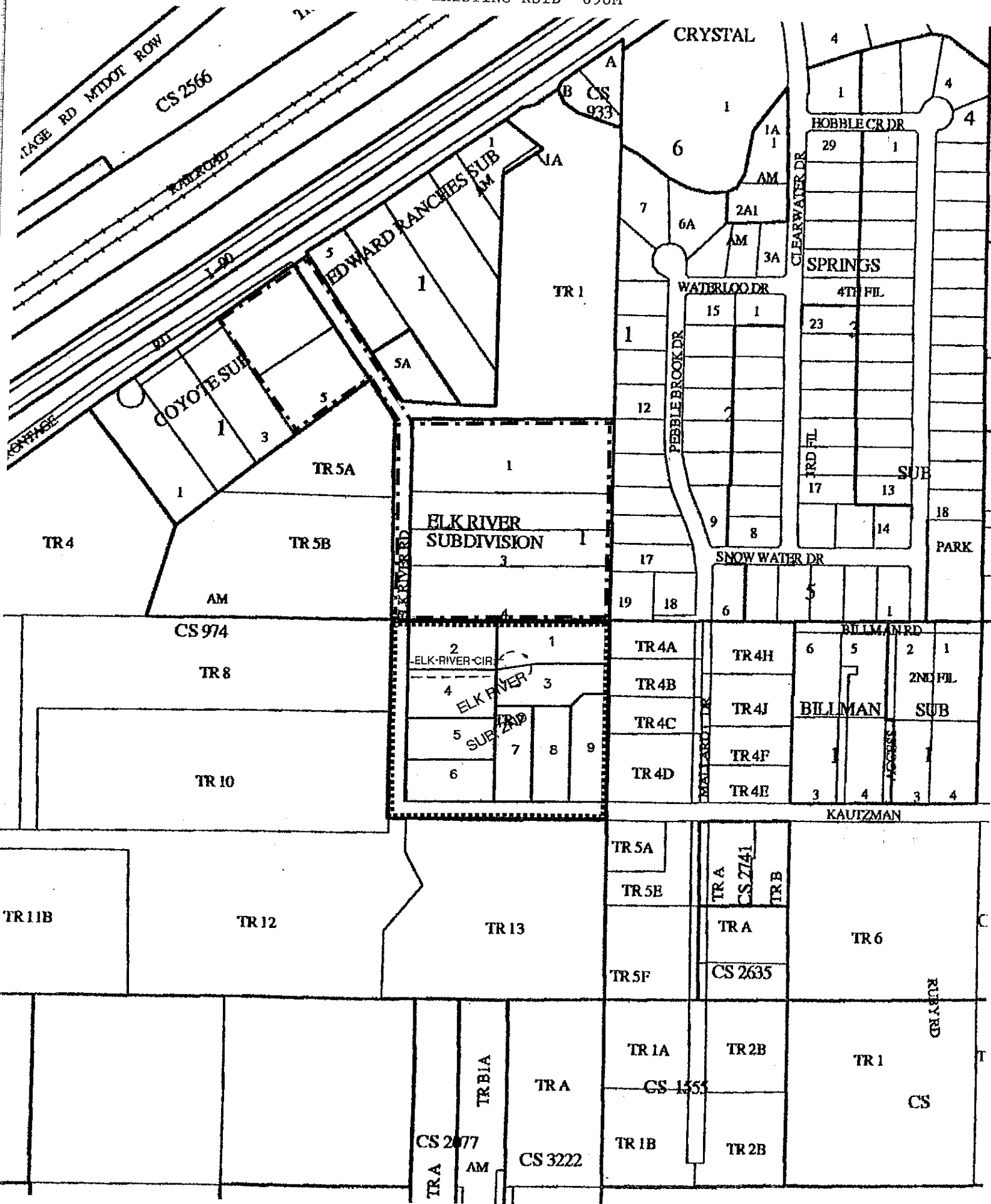
ATTEST:



John Ostlund, Member



Tony Nave
Clerk and Recorder



PETITION TO ESTABLISH A RURAL SPECIAL IMPROVEMENT DISTRICT (RSID)

EXHIBIT B

ESTIMATED ANNUAL MAINTENANCE COST

FALL MAINTENANCE:

ACTIVITY/IMPROVEMENT	ESTIMATED COST
Grading - 3 hours, mobilization - 1/2 hour	\$ 262.50
	\$

WINTER MAINTENANCE:

ACTIVITY/IMPROVEMENT	ESTIMATED COST
	\$
	\$

SPRING MAINTENANCE:

ACTIVITY/IMPROVEMENT	ESTIMATED COST
Grading - 3 hours, mobilization - 1/2 hour	\$ 262.50
	\$

SUMMER MAINTENANCE:

ACTIVITY/IMPROVEMENT	ESTIMATED COST
	\$
	\$

TOTAL ESTIMATED ANNUAL MAINTENANCE COST: \$ 525.00

\$525.00 was cost estimate for original district. Cost estimate for expanded district is probably twice the amount.

AREA TO BE ADDED TO RSID 696M

AREA OF EXISTING RSID 696M

